

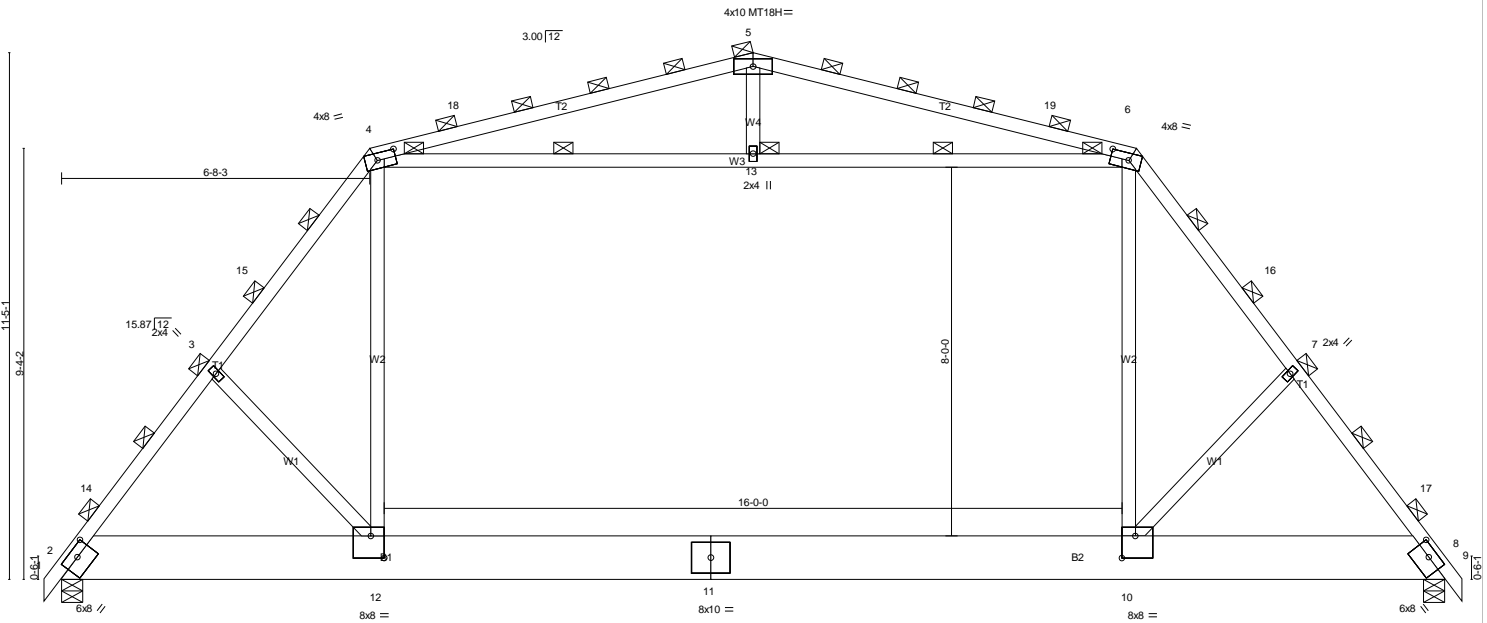
Job	Truss	Truss Type	Qty	Ply	
B0903115	GAM30	GAMBREL ATTIC	10	1	

Job Reference (optional)  
7:100 s Sep 25 2008 MiTek Industries, Inc. Fri Mar 20 13:48:34 2009 Page 1

APM Building Materials, Arendtsville, PA, Kurt Vines

-0-4-8	3-4-4	6-10-4	23-1-12	26-7-12	30-0-0	30-4-8
0-4-8	3-4-4	3-6-0	16-3-8	3-6-0	3-4-4	0-4-8

Scale = 1:50.0



0-4-8	3-4-4	6-10-4	23-1-12	26-7-12	30-0-0	30-4-8
0-4-8	3-4-4	3-6-0	16-3-8	3-6-0	3-4-4	0-4-8

Plate Offsets (X,Y): [2:0-4-0,0-2-3], [4:0-4-12,0-1-14], [6:0-4-12,0-1-14], [8:0-4-0,0-2-3], [10:0-3-8,0-5-12], [12:0-3-8,0-5-12]

<b>LOADING</b> (psf)	<b>SPACING</b>	<b>CSI</b>	<b>DEFL</b>	<b>PLATES</b>	<b>GRIP</b>
TCLL 30.0	2-0-0	TC 0.82	in (loc) l/defl L/d	MT20	197/144
TCDL 7.0	Plates Increase 1.15	BC 0.69	Vert(LL) -0.26 10-12 >999 240	MT18H	197/144
BCLL 0.0	Lumber Increase 1.15	WB 0.34	Vert(TL) -0.35 10-12 >999 180		
BCDL 10.0	Rep Stress Incr YES	(Matrix)	Horz(TL) 0.02 8 n/a n/a		
	Code IBC2006/TPI2002		Attic room -0.20 10-12 966 360	Weight: 241 lb	

<b>LUMBER</b>	<b>BRACING</b>
TOP CHORD 2 X 4 SPF No.2	TOP CHORD 2-0-0 oc purlins (2-7-4 max.).
BOT CHORD 2 X 12 SYP No.1	BOT CHORD Rigid ceiling directly applied or 6-6-5 oc bracing.
WEBS 2 X 4 SPF No.2	WEBS 1 Row at midpt 4-13, 6-13
	JOINTS 1 Brace at Jt(s): 4, 6, 5, 13

**REACTIONS** (lb/size) 2=1743/0-2-9 (input: 0-5-8), 8=1743/0-2-9 (input: 0-5-8)  
 Max Horz 2=207(LC 9)  
 Max Uplift 2=6(LC 10), 8=6(LC 10)  
 Max Grav 2=2167(LC 2), 8=2167(LC 2)

**FORCES** (lb) - Max. Comp./Max. Ten. - All forces 250 (lb) or less except when shown.  
 TOP CHORD 2-14=-2799/0, 3-14=-2673/0, 3-15=-2606/9, 4-15=-2440/30, 6-16=-2440/30, 7-16=-2606/9,  
 7-17=-2673/0, 8-17=-2799/0, 4-18=-1619/119, 5-18=-1550/135, 5-19=-1550/135, 6-19=-1619/119  
 BOT CHORD 2-12=0/1588, 11-12=0/1576, 10-11=0/1576, 8-10=0/1588  
 WEBS 4-13=-553/28, 6-13=-553/28, 4-12=0/1369, 6-10=0/1369

**NOTES**

- 1) Unbalanced roof live loads have been considered for this design.
- 2) Wind: ASCE 7-05; 90mph; TC DL=4.2psf; BCDL=6.0psf; h=25ft; B=45ft; L=30ft; eave=4ft; Cat. II; Exp B; enclosed; MWFRS (all heights); cantilever left and right exposed; end vertical left and right exposed; Lumber DOL=1.60 plate grip DOL=1.60
- 3) \*\* TCLL: ASCE 7-05; Pr=30.0 psf (roof live load: Lumber DOL=1.15 Plate DOL=1.15); Pg=30.0 psf (ground snow); Ps= varies (min. roof snow=10.9 psf Lumber DOL=1.15 Plate DOL=1.15) see load cases; Category II; Exp B; Fully Exp.; Ct=1.1
- 4) Roof design snow load has been reduced to account for slope.
- 5) Unbalanced snow loads have been considered for this design.
- 6) This truss has been designed for greater of min roof live load of 16.0 psf or 2.00 times flat roof load of 20.8 psf on overhangs non-concurrent with other live loads.
- 7) All plates are MT20 plates unless otherwise indicated.
- 8) This truss has been designed for a 10.0 psf bottom chord live load nonconcurrent with any other live loads.
- 9) Ceiling dead load (5.0 psf) on member(s). 4-13, 6-13
- 10) Bottom chord live load (40.0 psf) and additional bottom chord dead load (0.0 psf) applied only to room. 10-12
- 11) Provide mechanical connection (by others) of truss to bearing plate capable of withstanding 6 lb uplift at joint 2 and 6 lb uplift at joint 8.
- 12) This truss is designed in accordance with the 2006 International Building Code section 2306.1 and referenced standard ANSI/TPI 1.
- 13) Design assumes 4x2 (flat orientation) purlins at oc spacing indicated, fastened to truss TC w/ 2-10d nails.
- 14) Attic room checked for L/360 deflection.

**LOAD CASE(S)** Standard

- 1) Snow: Lumber Increase=1.15, Plate Increase=1.15  
 Uniform Loads (plf)  
 Vert: 2-12=-20, 10-12=-100, 8-10=-20, 1-4=-36, 6-9=-36, 4-6=-10, 4-5=-56, 5-6=-56