

Job	Truss	Truss Type	Qty	Ply	
B0903115	AT30	ATTIC	10	1	

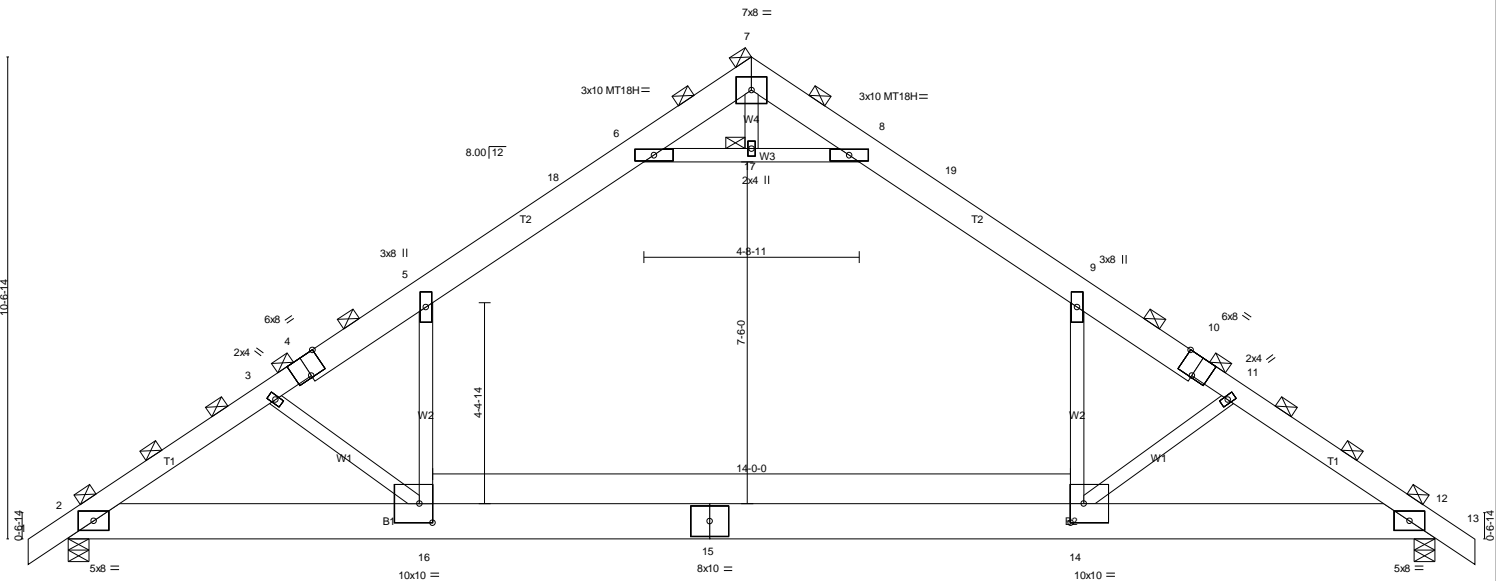
Job Reference (optional)

APM Building Materials, Arendtsville, PA, Kurt Vines

7:100 s Sep 25 2008 MiTek Industries, Inc. Fri Mar 20 13:48:20 2009 Page 1

-0-10-8	4-6-9	7-10-4	12-10-4	15-0-0	17-1-12	22-1-12	25-5-7	30-0-0	30-10-8
0-10-8	4-6-9	3-3-11	5-0-0	2-1-12	2-1-12	5-0-0	3-3-11	4-6-9	0-10-8

Scale = 1:50.6



4-6-9	7-10-4	22-1-12	25-5-7	30-0-0	0-10-8	0-10-8
-------	--------	---------	--------	--------	--------	--------

Plate Offsets (X,Y): [4:0-4:0,Edge], [10:0-4:0,Edge], [14:0-3:8,0-5-0], [16:0-3:8,0-5-0]

LOADING (psf)	SPACING	CSI	DEFL	PLATES	GRIP
TCLL 30.0	2-0-0	TC 0.79	in (loc) l/defl L/d	MT20	197/144
TCDL 7.0	Plates Increase 1.15	BC 0.75	Vert(LL) -0.64 14-16 >552 240	MT18H	197/144
BCLL 0.0	Lumber Increase 1.15	WB 0.50	Vert(TL) -0.93 14-16 >380 180		
BCDL 10.0	Rep Stress Incr YES	(Matrix)	Horz(TL) 0.04 12 n/a n/a		
	Code IBC2006/TPI2002		Attic room -0.30 14-16 574 360		
				Weight: 244 lb	

LUMBER	BRACING
TOP CHORD 2 X 8 SYP DSS "Except" T1: 2 X 6 SPF No.2	TOP CHORD 2-0-0 oc purlins (3-3-10 max.), except sheathed or 3-10-14 oc purlins: 5-6, 8-9.
BOT CHORD 2 X 10 SYP No.1	BOT CHORD Rigid ceiling directly applied or 8-6-0 oc bracing.
WEBS 2 X 4 SPF No.2	JOINTS 1 Brace at Jt(s): 7, 17

REACTIONS (lb/size) 2=1821/0-2-8 (input: 0-5-8), 12=1821/0-2-8 (input: 0-5-8)
 Max Horz2=162(LC 8)
 Max Uplift2=25(LC 10), 12=25(LC 10)
 Max Grav2=2114(LC 2), 12=2114(LC 2)

FORCES (lb) - Max. Comp./Max. Ten. - All forces 250 (lb) or less except when shown.
 TOP CHORD 2-3=-3504/0, 3-4=-3068/0, 4-5=-2926/0, 5-18=-2131/46, 6-18=-1936/76, 6-7=0/997, 7-8=0/997,
 8-19=-1936/76, 9-19=-2131/46, 9-10=-2926/0, 10-11=-3068/0, 11-12=-3504/0
 BOT CHORD 2-16=0/2840, 15-16=0/2159, 14-15=0/2159, 12-14=0/2840
 WEBS 6-17=-3481/69, 8-17=-3481/69, 5-16=0/1442, 9-14=0/1442, 3-16=-902/73, 11-14=-902/73, 7-17=0/356

- NOTES**
- 1) Unbalanced roof live loads have been considered for this design.
 - 2) Wind: ASCE 7-05; 90mph; TCDL=4.2psf; BCDL=6.0psf; h=25ft; B=45ft; L=30ft; eave=4ft; Cat. II; Exp B; enclosed; MWFRS (all heights); cantilever left and right exposed ; end vertical left and right exposed; Lumber DOL=1.60 plate grip DOL=1.60
 - 3) TCLL: ASCE 7-05; Pr=30.0 psf (roof live load: Lumber DOL=1.15 Plate DOL=1.15); Pg=30.0 psf (ground snow); Ps=20.8 psf (roof snow: Lumber DOL=1.15 Plate DOL=1.15); Category II; Exp B; Fully Exp.; Ct=1.1
 - 4) Roof design snow load has been reduced to account for slope.
 - 5) Unbalanced snow loads have been considered for this design.
 - 6) This truss has been designed for greater of min roof live load of 16.0 psf or 2.00 times flat roof load of 20.8 psf on overhangs non-concurrent with other live loads.
 - 7) All plates are MT20 plates unless otherwise indicated.
 - 8) This truss has been designed for a 10.0 psf bottom chord live load nonconcurrent with any other live loads.
 - 9) Ceiling dead load (5.0 psf) on member(s). 5-6, 8-9, 6-17, 8-17
 - 10) Bottom chord live load (40.0 psf) and additional bottom chord dead load (0.0 psf) applied only to room. 14-16
 - 11) Provide mechanical connection (by others) of truss to bearing plate capable of withstanding 25 lb uplift at joint 2 and 25 lb uplift at joint 12.
 - 12) This truss is designed in accordance with the 2006 International Building Code section 2306.1 and referenced standard ANSI/TPI 1.
 - 13) Design assumes 4x2 (flat orientation) purlins at oc spacing indicated, fastened to truss TC w/ 2-10d nails.
 - 14) Attic room checked for L/360 deflection.

LOAD CASE(S) Standard